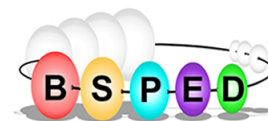


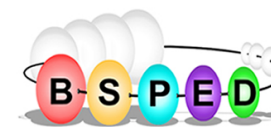


BSPED Benefactors Prospectus



British Society for
Paediatric Endocrinology
and Diabetes

BSPED Benefactors Prospectus



**British Society for
Paediatric Endocrinology
and Diabetes**

The BSPED offer three levels of Benefactor package to companies.

Gold - £15,000

Silver - £10,000

Bronze - £5,000

Bespoke Partnerships

BSPED Partnership Agreements are now available through liaison with the BSPED Treasurer

Supporting the BSPED

BSPED Benefactors get access to professionals from a range of disciplines including tertiary paediatric endocrinologists and diabetologists, general paediatricians with an interest in endocrinology and/or diabetes, researchers, nurses and other healthcare professionals involved in the care of patients with endocrine disorders or diabetes mellitus. Industry colleagues benefit from the knowledge generated from our members within the conference setting amongst others. Benefactor packages allow industry access to delegates at the BSPED Annual Conference as well as giving the opportunity to hold satellite symposia and sponsor specific programmes at the event. Benefactors also have the opportunity to receive output from the BSPED Growth Hormone Audit, support our prestigious Paediatric Endocrine Specialist Nurse course at London Southbank University. The Gold Benefactor packages will allow direct correspondence with the BSPED full membership.

About the BSPED

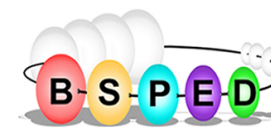
The society aims to improve the care of children and young people with endocrine disorders or diabetes mellitus, by bringing together professionals from a range of disciplines.

The BSPED is recognised by the Royal College of Paediatrics and Child Health (RCPCH) as the sole UK society responsible for this field of paediatric medicine. We govern the training of doctors in paediatric endocrinology and diabetes, and actively support the ongoing training and education of healthcare professionals in this specialist area. The society encourages collaboration and open dialogue, with abundant opportunities for the dissemination of research results.

The BSPED promotes the generation of evidence-based guidelines that will lead to more consistent management of endocrine disorders and diabetes mellitus throughout the UK.

The society also aims to advance education in paediatric endocrinology and diabetes for professionals, patients and their parents. The BSPED is able to fund research and clinical audits with support from a number of benefactors.





Society

Gold Benefit - £15,000

Website profile

2 emails to membership to promote a grant/event

Industry perspective article in Newsletter

Priority option to sponsor Research Grant (£15k)

Option to sponsor Growth Hormone Registry (£2k)

Option to sponsor London Southbank Paediatric Endocrine Nurse course (£3.7k)

Option to support Paediatric Diabetes Course at London Southbank University

Silver Benefit - £10,000

Logo on website

1 email to membership

-

Option to sponsor Research Grant (£15k)

Option to sponsor Growth Hormone Registry (£2k)

Option to sponsor London Southbank Paediatric Endocrine Nurse course (£3.7k)

Option to support Paediatric Diabetes Course at London Southbank University

Bronze Benefit - £5,000

Logo on website

-

-

Option to sponsor Research Grant (£15k)

-

-

-

Conference

Gold Benefit

Exhibition space*

5 exhibitor passes

Profile in programme book - logo and text

Advert in programme book

Email to conference delegates

1 delegate bag insert

Recognition of sponsorship on site

Option to support Satellite Symposia (£5k)**

Option to support Diabetes Professionals Programme (£2.5k)**

Option to support Endocrine Professionals programme (£2.5k)**

Silver Benefit

Exhibition space*

4 exhibitor passes

Profile in programme book - logo and text

Advert in programme book

-

1 delegate bag insert

Recognition of sponsorship on site

-

-

-

Bronze Benefit

Exhibition space*

3 exhibitor passes

Profile in programme book - logo and text

-

-

1 delegate bag insert

Recognition of sponsorship on site

-

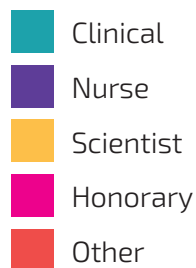
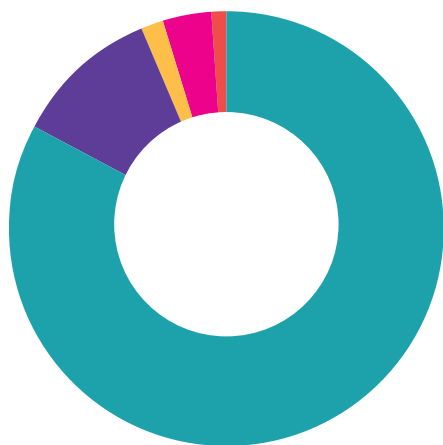
-

-

*Stand size at the meeting will be commensurate with the level of your benefactorship and will depend on the available space at the chosen venue.

**On a first come first served basis.

BSPED Membership Profile

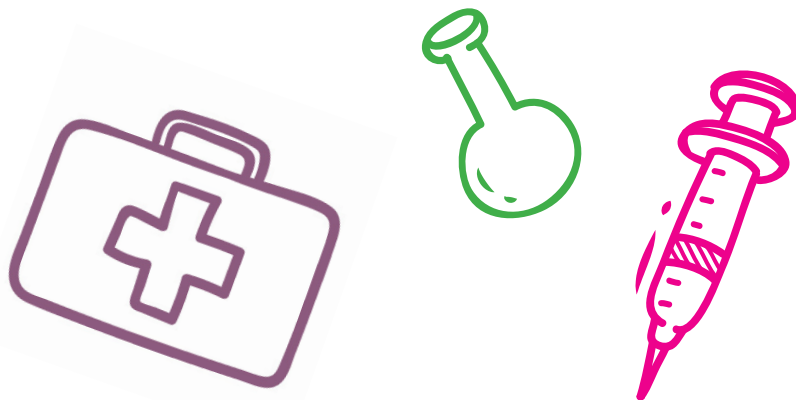


BSPED Partnership Agreements

The British Society for Paediatric Endocrinology and Diabetes acknowledges the important role that our Benefactors play in allowing us to realise our charitable aims. Following consultation with our Benefactors we introduced an exciting new approach to working with companies. Partnership-level working is now available to those companies wishing to develop longer-term, bespoke, strategic relationships with BSPED and our members.

Benefits of partnership with the BSPED include:

- Development of a bespoke package of activity tailored to meet your specific aims and objectives
- Collaborative working with the BSPED
- Opportunities to support the BSPED conference, Research Grants, the Paediatric Endocrine Nurse Course in London Southbank and BSPED Growth Hormone Audit.



How to become a BSPED Benefactor

If you would like to become a Benefactor or find out some more information please contact the BSPED Treasurer Dr Assunta Albanese at a.albanese@nhs.net

To find out more about the British Society for Paediatric Endocrinology and Diabetes please visit www.bsped.org.uk.

